

AUSTRALIAN CAPITAL TERRITORY BUSINESS INDICATORS, AUGUST 1994

SUMMARY OF FINDINGS

Series updated since the July 1994 issue are: labour force; industrial disputes; housing finance; building approvals; building commencements; CPI; price indexes of house building materials; retail turnover; new motor vehicle registrations; and engineering construction activity.

Notable movements include:

- The trend series unemployment rate fell to 6.6 per cent in July 1994. This is the lowest this rate has been since July 1991 and compares favourably with the national rate of 9.7 per cent. Total employment growth has increased for the fourth consecutive month showing an increase of 1.9 per cent from the same period last year. The trend series employment participation rate in the ACT has remained steady at 72.2 per cent for the last three months. The national rate is also relatively steady with the July 1994 figure being 62.9 per cent. Long-term unemployment in both the ACT and Australia declined in June compared with May 1994 with the ACT showing a fall of 17.1 per cent compared to the national decline of 2.2 per cent. As a proportion of total unemployment, the long-term unemployed accounted for 27.7 per cent in the ACT and 36.2 per cent nationally in June 1994.
- The number of dwelling unit approvals in the ACT fell by 16.7 per cent in June compared with May 1994. The value of building approvals also fell in this period with new residential approvals falling 6.4 per cent and non-residential approvals declining by 11.1 per cent. The value of residential alterations and additions also declined with a fall of \$1.1 million, or 19.0 per cent in June 1994.
- There was \$277 million worth of building work commenced in the ACT in the March quarter 1994. This is an increase of 121.6 per cent from the December quarter 1993. This compares favourably to the national increase of 19.0 per cent for the same period.
- The All Groups CPI for the ACT increased by 0.5 per cent between the March and June quarters 1994, resulting in an annual increase of 1.5 per cent. The Food index fell in the June quarter 1994 for the ACT by 0.4 per cent. All other groups showed an increase in the quarter, the largest increase (2.1%) occurring in the Transport group mainly due to automotive fuel and vehicle insurance.
- Trend estimates of total retail turnover declined for the fourth consecutive month to \$167.2 million in June 1994. Hotels, liquor stores and licensed clubs increased by 0.8 per cent from June 1994 and 5.7 per cent from the same period last year.
- In original terms, the number of registrations of new motor vehicles reached its highest monthly level since August 1993, with 1,203 new motor vehicles being registered in the ACT in June 1994 compared with 1,259 in August 1993. The trend estimate for the ACT increased by 5.4 per cent in the 12 months to June 1994.
- In original, current price terms the value of engineering construction work done in the ACT in the March quarter 1994 fell by 4.5 per cent. This compares with decreases of 32.8 per cent (Northern Territory), 18.6 per cent (Queensland), 7.4 per cent (Tasmania), 4.9 per cent (Western Australia) and 4.6 per cent (South Australia) in the same period. The only States to show growth in the value of engineering construction work done in the March quarter 1994, were Victoria (20%) and New South Wales (7.6%).

DALMA JACOBS

Statistician Australian Capital Territory

INQUIRIES

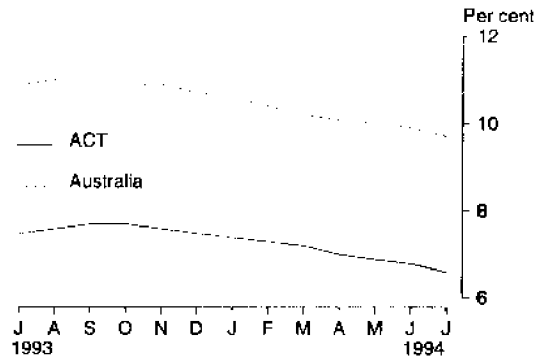
- for further information about statistics in this publication and the availability of related unpublished statistics contact Leonie Peadon on Canberra (06) 207 0286 or any ABS State office.
- for information about other ABS statistics and services please refer to the back page of this publication.

SELECTED BUSINESS INDICATORS

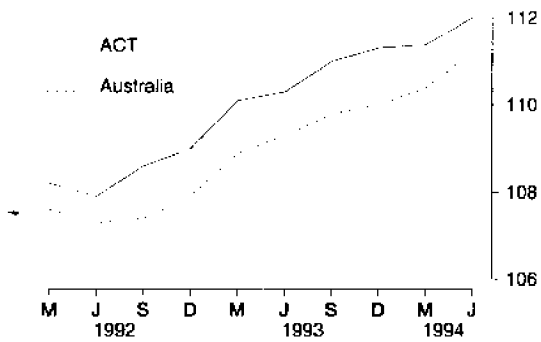
**LONG-TERM UNEMPLOYED, TOTAL PERSONS
AUSTRALIA**



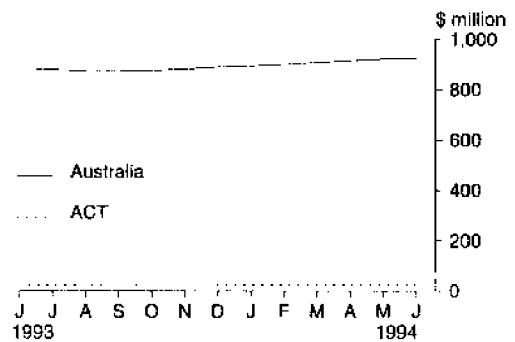
**LABOUR FORCE
Trend unemployment rates**



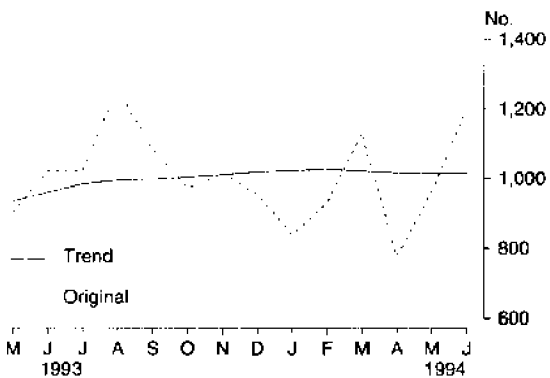
**CONSUMER PRICE INDEX
(Reference base year 1989-90 = 100)**



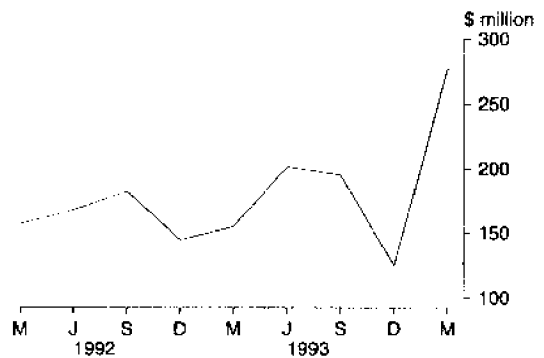
**RETAIL TURNOVER
Department and general stores
Trend series**



NEW MOTOR VEHICLE REGISTRATIONS



VALUE OF TOTAL BUILDING COMMENCEMENTS



**TABLE 1. AUSTRALIAN BUSINESS EXPECTATIONS: SALES,
DECEMBER QUARTER 1993/JUNE QUARTER 1995
EXPECTED AGGREGATE CHANGE
(per cent)**

Period	Australian Capital Territory	Australia
Short-term		
December 1993	1.1	3.6
March 1994	0.1	-1.4
June 1994	1.6	1.9
September 1994	1.3	1.9
Medium-term		
September 1994	1.5	2.9
December 1994	2.7	3.1
March 1995	3.8	3.9
June 1995	6.2	3.3

TABLE 2. AUSTRALIAN CAPITAL TERRITORY BUSINESS INDICATORS, AUGUST 1994

Indicator	Unit	Australian Capital Territory			Australia		
		Latest figure	Change from previous period (%)	Change from same period previous year (%)	Latest figure	Change from previous period (%)	Change from same period previous year (%)
POPULATION, VITAL AND LABOUR							
POPULATION, December qtr 93	'000	299.4	0.1	1.2	17 746.6	0.2	1.0
Natural increase	no.	775	-2.5	-12.1	32 918	2.6	—
Net migration	no.	-523	-623.0	-5.3	4 123	-76.3	42.6
Total increase	no.	252	-71.8	-23.6	37 041	-25.1	3.4
LABOUR FORCE, July 94 p							
Original series							
Employed	'000	154.6	0.7	-1.8	7 985.0	1.2	4.0
Unemployed	'000	10.5	1.0	-11.0	803.9	-4.2	-9.8
Unemployment rate(a)	%	6.3	—	-10.0	9.1	-5.2	-12.5
Participation rate(a)	%	72.3	0.6	1.1	63.0	0.5	1.3
Long-term unemployed (June 94)	'000	2.9	-17.1	-9.4	304.1	-2.2	-11.7
Long-term unemployed as percentage total unemployed (June 94)	%	27.7	-13.2	1.5	36.2	-1.1	-4.0
Trend series							
Employed	'000	153.8	0.3	1.9	7 919.4	0.3	3.3
Unemployed	'000	10.9	-1.8	-10.7	847.2	-1.2	-9.8
Unemployment rate(a)	%	6.6	-1.5	-12.0	9.7	-1.0	-11.0
Participation rate(a)	%	72.2	—	-0.8	62.9	0.2	0.6
JOB VACANCIES, May qtr 94	'000	1.9	26.7	18.8	49.4	7.6	63.6
INDUSTRIAL DISPUTES IN PROGRESS, April 94							
Working days lost	'000	0.2	200.0	200.0	25.6	-58.2	236.8
Days lost per '000 employees (year ended April 94)	no.	82	2.5	720.0	97	3.2	-44.6
BUILDING AND CONSTRUCTION							
HOUSING FINANCE, May 94							
Secured commitments to individuals for							
Original series							
Construction of dwellings	\$m	13.4	8.1	31.4	846.2	11.2	40.1
Purchase of new dwellings	\$m	23.9	39.8	45.7	228.8	14.1	48.4
Purchase of established dwellings	\$m	70.5	2.0	17.9	3 501.4	14.2	31.4
Total new housing commitments	\$m	121.1	12.5	28.0	4 576.4	13.6	33.7
Seasonally adjusted series							
Total new housing commitments	\$m	108.5	5.5	21.9	4 329.8	-1.9	29.9
Trend series							
Total new housing commitments	\$m	108.8	-0.4	17.7	4 401.9	1.3	32.0
BUILDING APPROVALS, June 94							
Dwelling units	no.	299	-16.7	-20.7	17 478	-6.2	13.3
Value of new residential	\$m	29.1	-6.4	-14.9	1 553.7	-2.0	24.6
Value of residential alterations and additions	\$m	4.7	-19.0	-21.7	194.4	-22.3	6.3
Value of non-residential	\$m	20.9	-11.1	-9.9	1 164.4	90.2	66.0
Value of total building	\$m	54.8	-9.4	-13.6	2 912.5	19.0	36.7
BUILDING COMMENCEMENTS, March qtr 94							
New houses	no.	374	-10.3	-19.0	28 759	-9.1	7.1
Value of houses commenced	\$m	40.8	-19.5	-17.4	2 635.9	-8.0	10.3
Value of non-residential building commenced	\$m	159.8	359.2	136.0	2 433.6	6.8	4.0
Value of total commencements	\$m	277.0	121.6	78.0	6 520.9	-3.3	9.2
PRICE INDEXES							
Established house price index (March qtr 94) (1989-90=100.0)		134.9	-0.3	1.4	109.6	1.1	2.8
Price index of house building materials (May 94) (b)		151.6	0.1	5.1	153.8	0.1	3.7

TABLE 2. AUSTRALIAN CAPITAL TERRITORY BUSINESS INDICATORS, AUGUST 1994 — *continued*

Indicator	Unit	Australian Capital Territory			Australia		
		Latest figure	Change from previous period (%)	Change from same period previous year (%)	Latest figure	Change from previous period (%)	Change from same period previous year (%)
PRICES, WAGES AND CONSUMER SPENDING							
CONSUMER PRICE INDEX, June qtr 94 (1989-90=100.0)							
Food		111.4	-0.4	2.6	109.5	-0.3	1.4
Housing		99.3	0.5	-1.1	94.4	0.7	-0.8
Transport		117.8	2.1	2.6	115.2	1.8	2.8
All groups		112.0	0.5	1.5	111.2	0.7	1.7
AVERAGE WEEKLY EARNINGS, February qtr 94							
Original series							
Males	\$	712.5	3.2	7.0	625.6	1.1	2.4
Females	\$	490.4	2.6	4.3	416.8	2.0	1.7
Total persons	\$	601.3	2.9	6.2	529.0	1.4	2.1
Trend series							
Males	\$	706.5	2.3	6.5	621.4	0.2	2.4
Females	\$	482.2	0.2	3.4	411.0	..	1.8
Total persons	\$	594.4	1.5	5.4	523.3	0.1	2.1
RETAIL TURNOVER, June 94							
Original series							
Grocers, confectioners, tobacconists	\$m	52.0	-1.5	9.5	2 514.1	2.1	6.3
Department and general stores	\$m	23.4	-0.4	-4.5	905.7	0.9	3.1
Hotels, liquor stores and licensed clubs	\$m	11.9	-4.8	8.2	1 018.0	-0.4	10.2
All other stores	\$m	75.3	-1.8	1.3	3 954.6	0.3	7.7
Total	\$m	162.6	-1.8	3.4	8 392.4	0.8	7.1
Trend series							
Grocers, confectioners, tobacconists	\$m	53.9	—	7.4	2 547.1	0.3	3.7
Department and general stores	\$m	24.2	—	4.3	926.3	0.5	4.8
Hotels, liquor stores and licensed clubs	\$m	12.9	0.8	5.7	1 089.1	0.7	8.9
All other stores	\$m	76.2	-2.3	1.9	4 065.5	—	6.5
Total	\$m	167.2	-1.0	2.4	8 628.0	0.2	5.8
TOURISM AND TRANSPORT							
HOTELS, MOTELS AND GUEST HOUSE ACCOMMODATION, December qtr 93							
Original series							
Room nights	no.	215.6	7.9	4.5	8 503.1	1.7	7.6
Takings at current prices	\$m	18.3	10.2	7.0	709.5	5.5	10.0
Takings at 1989-90 prices	\$m	16.6	9.9	6.4	590.6	1.2	4.8
Seasonally adjusted series							
Room nights	no.	206.8	3.6	3.7	8 378.4	4.2	7.5
Takings at current prices	\$m	17.6	5.4	6.0	689.8	6.2	9.8
Takings at 1989-90 prices	\$m	16	6.0	5.3	574.3	1.7	4.7
Trend series							
Room nights	no.	208.5	7.1	3.7	8 338.4	3.0	7.4
Takings at current prices	\$m	17.6	6.0	6.7	686.0	4.7	9.7
Takings at 1989-90 prices	\$m	15.5	2.0	5.4	570.4	0.3	4.4
NEW MOTOR VEHICLE REGISTRATIONS, June 94							
Motor vehicles	no.	1 203	25.1	17.7	57 950	8.9	8.7
Seasonally adjusted motor vehicles	no.	1 130	15.8	25.7	52 133	2.2	9.3
Trend motor vehicles	no.	1 015	-0.1	5.4	51 466	1.6	12.2
INTERSTATE ROAD FREIGHT MOVEMENT, March qtr 94							
Originating	'000 tonnes	45.8	-1.7	14.5	4 492.3	-3.6	-0.2
Receiving	'000 tonnes	134.4	-1.2	-25.7	4 492.3	3.6	-0.2
AGGREGATE INDICATORS							
STATE ACCOUNTS, March qtr 94							
Original series							
Gross State product at current prices	\$m	2 226	-9.4	6.3	104 131	-8.6	6.0
State final demand at average 1989-90 prices	\$m	2 847	-6.3	5.4	92 402	-7.7	4.2
Private final consumption expenditure	\$m	1 266	-9.9	3.7	64 396	-7.9	5.1
Private gross fixed capital expenditure and components	\$m	241	-16.9	-0.8	14 914	-10.6	9.3
Trend series							
Gross State product at current prices	\$m	2 358	1.1	6.3	108 350	1.5	6.0
State final demand at average 1989-90 prices	\$m	2 989	0.6	2.5	97 162	1.3	3.2
Private final consumption expenditure	\$m	1 345	1.4	5.8	67 189	1.6	5.4
Private gross fixed capital expenditure and components	\$m	273	-1.4	-8.4	15 669	1.2	4.7

(a) Change shown in terms of percentage points. (b) ACT data 1986-87 = 100.0, Australia 1985-86 = 100.0.

Source: ABS Catalogue Nos: 3101.0, 5242.0, 5609.0, 6203.0, 6302.0, 6321.0, 6354.0, 6401.0, 6408.0, 6416.0, 8501.0, 8634.0, 8635.8, 8731.0, 8752.0 and 9303.0.

TABLE 3. ACT IN RELATION TO THE REST OF AUSTRALIA

<i>Indicator</i>		<i>Latest period</i>	<i>NSW</i>	<i>Vic.</i>	<i>Qld</i>	<i>SA</i>	<i>WA</i>	<i>Tas.</i>	<i>NT</i>	<i>ACT</i>	<i>Aust.</i>
LABOUR FORCE											
Employed persons (original)	'000	July 94 p	2 666.4	2 004.7	1 435.7	649	802.1	195.9	76.5	154.6	7 985
Unemployment rate (trend)	%	July 94 p	9.7	10.4	9.1	10.6	8.3	10.6	7.1	6.6	9.7
BUILDING APPROVALS											
Dwelling units approved	no.	June 94	5 106	2 705	5 117	1 179	2 655	306	111	299	17 478
Value of non-residential building approved	\$	June 94	262.4	608.7	161	31.3	63.7	11.6	4.8	20.9	1 164.4
Value of all buildings approved	\$	June 94	861.3	904.9	625.1	126.7	284.4	38	17.4	54.8	2 912.5
ENGINEERING CONSTRUCTION											
Value of engineering construction work done	\$m	Mar. qtr 94	1 053.4	609.8	583.3	179.2	443.8	55.4	41.5	40	3 006.4
AVERAGE WEEKLY EARNINGS											
Full-time adult ordinary time (trend)	\$	Feb. qtr 94	624.50	601.70	580.70	598.40	608.30	592.70	630.40	703.40	608.90
RETAIL TRADE											
Retail turnover (trend)	\$m	June 94	3 017.5	2 095.8	1 527.5	644.4	873.3	215.2	n.p.	167.2	8 628
HOTELS, MOTELS & GUEST HOUSE ACCOMMODATION											
Room nights occupied (trend)	no.	Dec. qtr 93	2 826.2	1 286.1	2 254.5	480.4	753.5	251.6	277.7	208.5	8 338.4
NEW MOTOR VEHICLE REGISTRATIONS											
Trend	no.	June 94	18 006	11 676	10 258	3 434	5 367	1 129	581	1 015	51 466
CONSUMER PRICE INDEX (1989-90 = 100.0)											
Food		June qtr 94	109.4	107.9	110.2	113	109.9	112.2	113.1	111.4	109.5
Housing		June qtr 94	95.9	92.4	100.7	91.9	87.8	94.2	104.5	99.3	94.4
Transport		June qtr 94	112.7	117.5	113.8	118.5	116	112.8	113.9	117.8	115.2
All Groups		June qtr 94	110	112	111.5	114.4	109.1	112.4	112.4	112	111.2

Note: Figures in the above tables are either preliminary, final or revised to previously published figures. Users should check the latest relevant publication or with ABS Information Services if the status of the statistic is important. Symbols used in this publication: — nil or rounded to zero; n.a. - not available; p - preliminary data; n.p - not available for publication.



For more information ...

The ABS publishes a wide range of statistics and other information on Australia's economic and social conditions. Details of what is available in various publications and other products can be found in the *ABS Catalogue of Publications and Products* available at all ABS Offices (see below for contact details).

Information Consultancy Service

Information tailored to special needs of clients can be obtained from the Information Consultancy Service available at ABS Offices (see Information Inquiries below for contact details).

National Dial-a-Statistic Line

0055 86 400

(Steadycom P/L premium rate 25c/21.4 secs.)

This number gives 24-hour access, 365 days a year for a range of statistics.

Electronic Data Services

A large range of data is available via on-line services, diskette, magnetic tape, tape cartridge and CD ROM. For more details about our electronic data services, contact any ABS Office (see below).

Bookshops and Subscriptions

There are over 400 titles of various publications available from ABS bookshops in all ABS Offices (see below Bookshop Sales for contact details). The ABS also provides a subscription service through which nominated publications are provided by mail on a regular basis at no additional cost (telephone Publications Subscription Service toll free on 008 02 0608 Australia wide).

Sales and Inquiries

Regional Offices	Information Inquiries	Bookshop Sales
SYDNEY (02)	268 4611	268 4620
MELBOURNE (03)	615 7000	615 7829
BRISBANE (07)	222 6351	222 6350
PERTH (09)	360 5140	360 5307
ADELAIDE (08)	237 7100	237 7582
HOBART (002)	20 5800	20 5800
CANBERRA (06)	207 0326	207 0326
DARWIN (089)	43 2111	43 2111
National Office		
ACT (06)	252 6007	008 020 608

ABS Email Addresses

Keylink	STAT.INFO/ABS
X.400	(C:AU,A:TELMEMO,O:ABS,SN:INFO,FN:STAT)
Internet	STAT.INFO@ABS. TELEMEMO.AU



Information Services, ABS, PO Box 10, Belconnen ACT 2616

